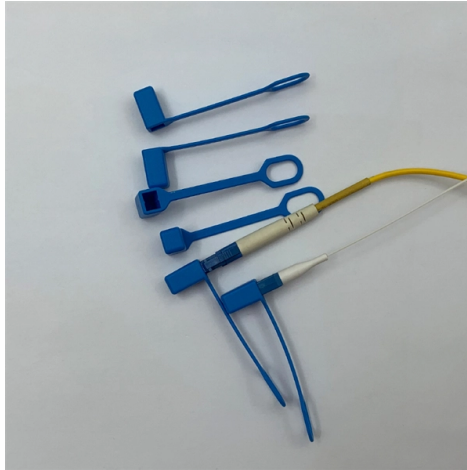


# Classification of Fiber Optic Wavelength Division Multiplexers



## Overview

Normal WDM (sometimes called BWDM) uses the two normal wavelengths 1310 and 1550 nm on one fiber. Dense WDM (DWDM) uses the C-Band (1530 nm-1565 nm) transmission window but with denser. In fiber-optic communications, wavelength-division multiplexing (WDM) is a technology which multiplexes a number of optical carrier signals onto a single optical fiber by using different wavelengths (i. They are a cost effective method to expand the capacity of existing fiber optic cables. Question 1: What does WDM do?

In traditional fiber-based telecommunications, information is transmitted over dedicated fiber. Fiber-optic transmission technology is key to achieving these goals, operating within specific wavelength regions where fiber exhibits minimal transmission loss to ensure efficient signal propagation.

## Article Content

Wavelength Division Multiplexers (WDM) by AFL

Wavelength Division Multiplexers (WDM) by AFL include CWDM LGX, Thin film filter CWDM, single channel OADM, DWDM LGX, Optical FTTx channel and RFoG wavelength division modules.

Optical Wavelength Bands Explained: Definition, Classification and ...

This article introduces the concept of optical wavelength bands, explains how they are classified, explores how WDM (Wavelength Division Multiplexing) uses them to increase capacity, ...

Optical Multiplexing

This guide gives a top level understanding of Wavelength Division Multiplexing, Coarse Wavelength Division Multiplexing and Dense Wavelength Division Multiplexing.

Four types of wavelength division multiplexing (WDM) | FiberMall

The device that combines the signals of different light source wavelengths together through a transmission fiber output is called a multiplexer. On the contrary, the device that splits the multi ...

Optical Wavelength Bands Explained: Definition, ...

This article introduces the concept of optical wavelength bands, explains how they are classified, explores how WDM (Wavelength Division ...

WDM 101 | Optical Communications | Corning

WDM Multiplexers and Demultiplexers combine and separate different wavelengths (colors) of light signals on a common fiber connection. This WDM technology can significantly increase the capacity ...

Wavelength Division Multiplexing - WDM, coarse, ...

It details the two main standards: coarse WDM (CWDM), with few channels and wide spacing for applications like metropolitan networks, and dense WDM (DWDM), ...

Wavelength Division Multiplexers (WDM)

Wavelength Division Multiplexing (WDM) is a technique in fiber-optic communication systems that enables multiple optical signals with different wavelengths to be combined, transmitted, and ...

Wavelength-division multiplexing

WDM systems are divided into three different wavelength patterns: normal (WDM), coarse (CWDM) and dense (DWDM). Normal WDM (sometimes called BWDM) uses the two normal wavelengths 1310 ...

#### Wavelength Division Multiplexers (WDM) Information

There are two types of wavelength division multiplexers. Dense wavelength division multiplexers (DWDM): These devices use optical (analog) multiplexing techniques to increase the carrying ...

#### Wavelength Division Multiplexing Introduction Guide

WDM is usually divided into two categories, Coarse WDM (CWDM) and Dense WDM (DWDM). They both come with their own channel configurations, advantages and disadvantages. The main ...

#### Wavelength Division Multiplexing - WDM, coarse, dense, optical fiber ...

It details the two main standards: coarse WDM (CWDM), with few channels and wide spacing for applications like metropolitan networks, and dense WDM (DWDM), which uses many narrowly ...

#### Optical Wavelength-Division Multiplexing for Data Communication ...

The wavelength spectrum allocation for the L-, C-, S-, E-, and O-bands is discussed. Related technologies, such as time-division multiplexing and erbium-doped fiber amplifiers, are also ...

## Contact Us

For more information, pricing, or custom solutions, please contact us:

Website: <https://automationauthoritysolar.co.za>

Email: [info@automationauthoritysolar.co.za](mailto:info@automationauthoritysolar.co.za)

Phone: +27 82 547 3961

Address: 15 Quantum Street, Technopark, Centurion, 0157, South Africa

This document is for informational purposes only. Specifications subject to change without notice.

