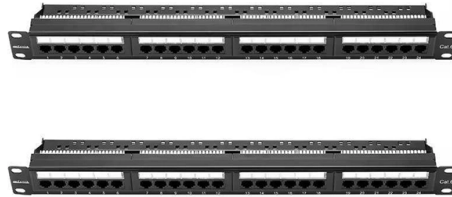


Fiji Fiber Optic Distribution Frame 8-core



Overview

The FIB-WMP-008 Optical Fiber Cable Distribution Box 8Core is engineered to meet YD/T2150-2010 industry standards, providing a reliable terminal link solution for FTTX access systems. It's mainly used in FTTX access system terminal link. The box is made of high strength PC plastic alloy injection molding, which has good sealing and aging resistance. This termination box is equipped with 8 ports that support FC connectors, making it ideal for high-performance. 8-Core Optical Distribution Box's Windowed Design for Easy Fiber Maintenance The 8-core fiber distribution box features a windowed design, suitable for installers performing fiber maintenance without removing the entire box cover. They only need to unscrew and open the window to check the fiber. Maximum capacity: 8 SC simplex, 8 LC duplex. Ideal for FTTx projects requiring centralized fiber management, including splicing, patching, and integration of cassette splitters. Suitable for both indoor (telecom rooms, basements) and outdoor (exterior walls, utility poles) installations, protected against dust and water per IP55 standards.

Article Content

Optical Fiber Cable Distribution Box 8Core – Winston

Designed for durability and long-term performance, it ensures stable fiber optic connections. Manufactured from high-strength PC plastic alloy through precision injection molding, this distribution ...

FDB-8CS 8-Core Optical Distribution Box

Compact 8-core fiber box with integrated tray design, supporting 8 SC adapters and cassette splitters. IP55-rated for wall/pole mounting in FTTx networks.

Optical Fiber Cable Distribution Box 8 Core

The 8 core FIB-WMP-008 optical fiber box is in accordance with the industry standard requirements of YD/T2150-2010. It's mainly used in FTTX access system terminal link. The box is made of high ...

8 Core Pre-Connectorized Distribution Box

Ideal for FTTH, FTTB, and MDU applications, this compact unit simplifies field installation by integrating pre-terminated connectors and internal fiber management.

8 Cores FTTH fiber optical terminal box Fiber Distribution Box

It integrates fiber splicing, splitting, distribution, storage, and cable connection in one solid protection box. Remark: Compatible with Corning + HuaWei + waterproof adaptor. Feature: The body is made ...

Indoor 8 Core Fiber Distribution Box for Optical Cable | CRXCONEC ...

Ideal for last mile FTTH deployments, this versatile 8 core fiber distribution box is perfectly suited for small-scale installations in apartments, residential, or commercial buildings, enhancing floor ...

FBR-11607 Fiber-Optic Distribution Box, 8-Core

FBR-11607 Fiber-Optic Distribution Box, 8-Core is a high quality product by Bud Industries used for electronic enclosure applications.

8 Core ABS+PC Cassette Type SC Adaptor Optical Distribution Box ...

This optical distribution box serves as a termination point for feeder cables to connect with drop cables in FTTX communication network systems. It enables fiber splicing, wase, and distribution while ...

8 Core NAP ODP FTB FTTH 3 Inlet Fiber Acess Terminal Box 1:8 ...

The 8 port Fiber Distribution Box is sturdy in structure, lightweight in size, and easy to install. It can be installed on walls or utility poles, and its waterproof cover ensures maximum moisture protection, ...

HAILE 8 Optical Fiber Termination Box P1-8-FC 8-Core FC Full ...

Product Overview The HAILE 8 Optical Fiber Termination Box P1-8-FC is an essential fiber optic distribution frame designed to manage and protect fiber optic cables in various networking ...

Contact Us

For more information, pricing, or custom solutions, please contact us:

Website: <https://automationauthoritysolar.co.za>

Email: info@automationauthoritysolar.co.za

Phone: +27 82 547 3961

Address: 15 Quantum Street, Technopark, Centurion, 0157, South Africa

This document is for informational purposes only. Specifications subject to change without notice.

