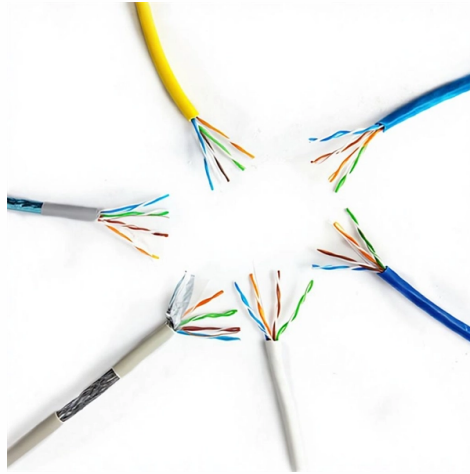


Fire distribution box output failure



Overview

This occurs when the ES-PS powering the IDNAC card has tripped its main overcurrent. A fault on a bell or output circuit may display a variety of specialized messages in addition to the basic trouble message. A "short" or "open" condition may also be identified. Check for faults on the circuit. A single SLC is drawing above rating. There is one or more extra devices, for example, devices. The 4100 Series was released onto the Australian Market in 1990. The first version supported 512 devices or points. The 4100A was a localized version of the 4100+ & has the FireFighter Interface. When a fire alarm panel system trouble signal activates, it indicates that a non-fire fault condition exists within the fire alarm system, signaling that a component or circuit isn't functioning as intended and requires investigation and repair to maintain full operational readiness. If you have any issues I would be happy to guide you over the phone at 9736631011 or through email at info@digitize-inc.com "What. Although fire alarm systems are designed to keep you and your business safe, it can be unnerving to suddenly see random things lighting up on your device's panel if you don't know what they mean.

Article Content

What Are the Most Common Fire Alarm Panel Trouble Signals?

You'll likely see a trouble signal if your fire alarm needs new batteries or if there's a disconnect between the batteries and the alarm itself. Fire protection systems that don't have power ...

MIR-QS4 Technical Reference Manual

Use the commands on the Disable menu to take individual zones, input and output points, option cards, and other parts of the fire alarm system out of service.

Simplex Fire Products

Manually controlling output points will create a fault on the LCD display, and to clear these faults each manually altered output will need to be set back to its AUTO state.

Common Fire Alarm Issues and Fixes | Aura Fire Safety

Wiring faults, disconnected devices, and power loss are some of the most frequent and dangerous failures. Loose terminals, corroded connections, tripped breakers, or depleted backup batteries can ...

Fire Alarm Panel System Trouble: Diagnosing, Understanding, and ...

In a fire alarm system, this usually means that either the positive or negative conductor of a circuit has inadvertently come into contact with a grounded surface, like the metal conduit, a ...

Common Fire Alarm Trouble Signals

A fault on a bell or output circuit may display a variety of specialized messages in addition to the basic trouble message. A "short" or "open" condition may also be identified.

FIRE ALARM PANEL SIGNALS MEANING

RE ALARM PANEL SIGNALS MEANING This is a quick guide to what each fire alarm signal means, possible causes for the activation, and how to fix the problem. Always call your fire alarm service ...

Fire Alarm Panel System Trouble: Diagnosing, ...

In a fire alarm system, this usually means that either the positive or negative conductor of a circuit has inadvertently come into contact with a ...

Trouble Messages on the 4100ES

Table 1 explains the ES-PS trouble messages that may appear on the FACU display. Table 1. ES-PS trouble messages. The IDNAC card is drawing more current than it should. Check for faults on the ...

How To Find & Fix The 15 Most Common Trouble Codes on Your FACP

"What issues may be causing trouble signals on a fire alarm control panel?" It is crucial to quickly address operational and maintenance errors being indicated by trouble signals on your ...

What are the common problems of distribution boxes?

The main problems encountered with distribution boxes include installation and layout problems, electrical connection and grounding problems, maintenance and care problems, ...

Contact Us

For more information, pricing, or custom solutions, please contact us:

Website: <https://automationauthoritiesolar.co.za>

Email: info@automationauthoritiesolar.co.za

Phone: +27 82 547 3961

Address: 15 Quantum Street, Technopark, Centurion, 0157, South Africa

This document is for informational purposes only. Specifications subject to change without notice.

